

The drawings and any related notes, or text contained thereon are based upon typical requirements of Parex, Incorporated exterior insulation and finish systems and are published strictly as a guide for architectural and construction industry professionals to illustrate typical or general design conditions.

These details are not to be used by themselves, and do not constitute design instructions for PB EIFS application. These details must be used in conjunction with Parex, Incorporated current product specifications, product data sheets, and application instructions.

Any details shown are strictly for the purpose of illustrating typical PB EIFS design applications. Any other materials shown in any details are incidental to the details, and are included only for clarity of the PB EIFS system detail. Please consult with the manufacturers and/or suppliers of any separate materials for their product specifications and applications instructions.

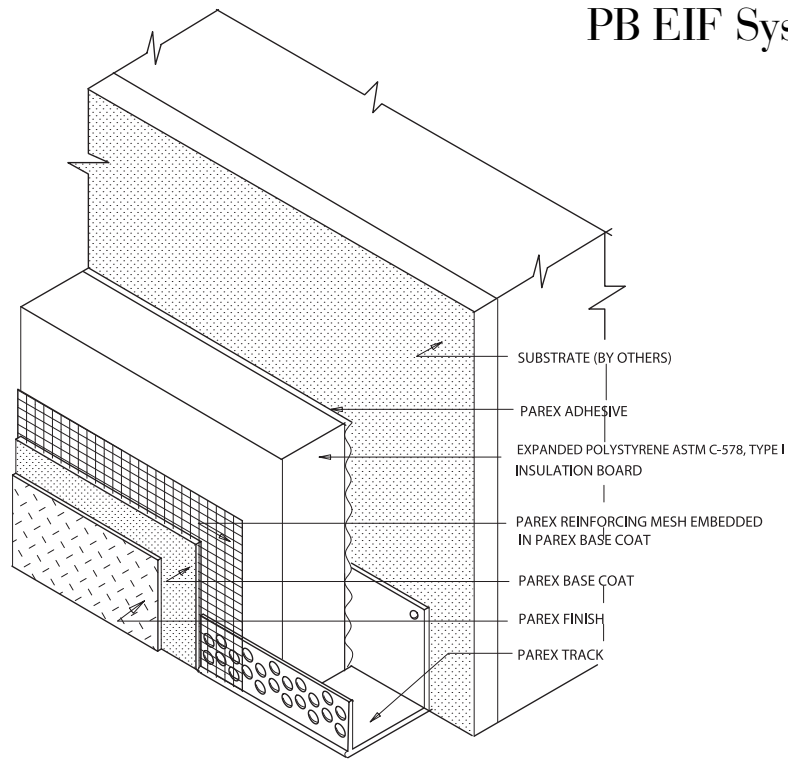
Where site or design conditions not shown in these details are present, or any unusual design is involved, please consult with Parex, Incorporated technical department for assistance.

PAREX, INCORPORATED DOES NOT WARRANT THE FITNESS OF SUITABILITY OF THESE DETAILS FOR CONSTRUCTION, OR ASSUME ANY LIABILITY FOR USE OF THESE DETAILS. IT IS THE SOLE RESPONSIBILITY OF ANY ARCHITECTURAL OR CONSTRUCTION INDUSTRY PROFESSIONAL TO APPLY THEIR PROFESSIONAL KNOWLEDGE IN UTILIZING THE INFORMATION CONTAINED IN THESE DETAILS.

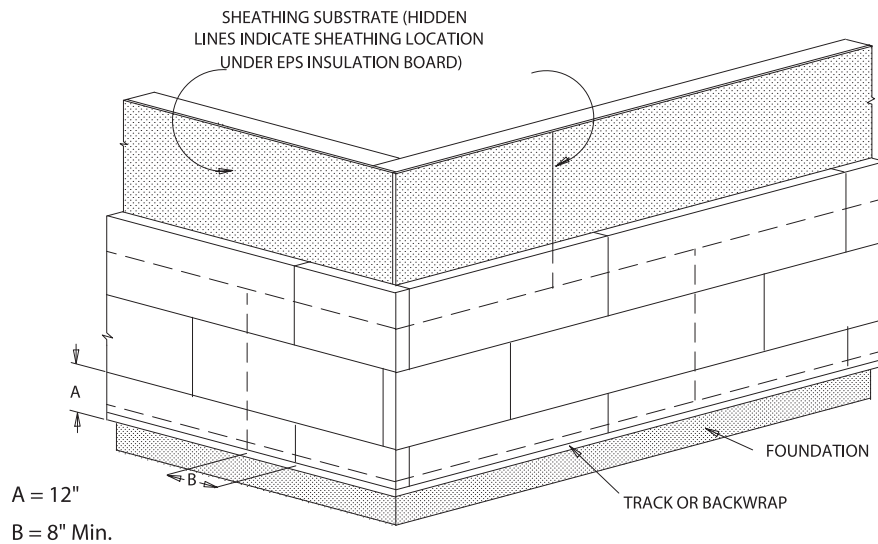
Contents

Subject	Detail	Page
General Construction	G1.02 Parex Standard System components.	3
	G2.01 Insulation board application.	3
	G3.01 Preliminary mesh application.	4
	G4.01 Inside corner.	4
	G5.01 Outside corner.	4
Expansion Joints	E1.01 Track expansion joint.	5
	E2.01 Backwrapped expansion joint.	5
	E3.01 Building isolation joint.	5
	E4.01 Dissimilar substrates.	6
	E5.01 Inside corner at dissimilar substrates.	6
	E6.01 Wood framed sill.	7
	E7.01 Wood framed floor line.	7
Terminations	T1.01 Termination above pavement.	8
	T2.01 Termination above grade.	8
	T3.01 Base coat below grade.	9
	T6.01 Termination at balcony deck.	9
Windows	W1.01 Backwrapped jamb.	10
	W2.01 Seal tape termination at flush/projecting jamb.	10
	W3.01 Insulated jamb return.	10
	W4.01 Uninsulated jamb return.	11
	W5.01 Head with drip edge track.	11
	W6.01 Insulated head return.	11
	W7.02 Uninsulated head return.	12
	W8.03 Rough sill edge wrapped prior to flashing.	12
Roof Line	W8.04 Backwrapped termination at sill.	12
	R1.03 Parapet.	13
	R1.04 Parapet coated prior to flashing.	13
	R2.01 High wall at low roof.	14
	R3.01 Gravel stop.	14
	R4.01 Insulated soffit.	15
	R5.03 Termination at soffit.	15
	R6.02 Intersection of roof cornice at standard system wall.	16
	R6.02B Intersection of roof cornice at standard system wall.	16
Aesthetic Features	A1.02 Aesthetic groove/reveal.	17
	A2.01 Small aesthetic band/projection.	17
Penetrations	P1.01 Fixture attachment.	18
	P2.02 Scupper.	18
	P3.01 Removable appliance.	18

PB EIF System Details



G1.02 PAREX STANDARD SYSTEM COMPONENTS AT BASE OF SYSTEM



A. FIRST COURSE OF EPS IS HALF WIDTH TO ALLOW FOR OFFSET OF HORIZONTAL JOINTS OF EPS INSULATION BOARD AND SHEATHING BOARD.

B. VERTICAL OFFSET OF EPS INSULATION BOARD AND SHEATHING BOARD JOINTS SHOULD TYPICALLY BE NO LESS THAN 12"

G201 INSULATION BOARD APPLICATION
(SHEATHED SUBSTRATES)

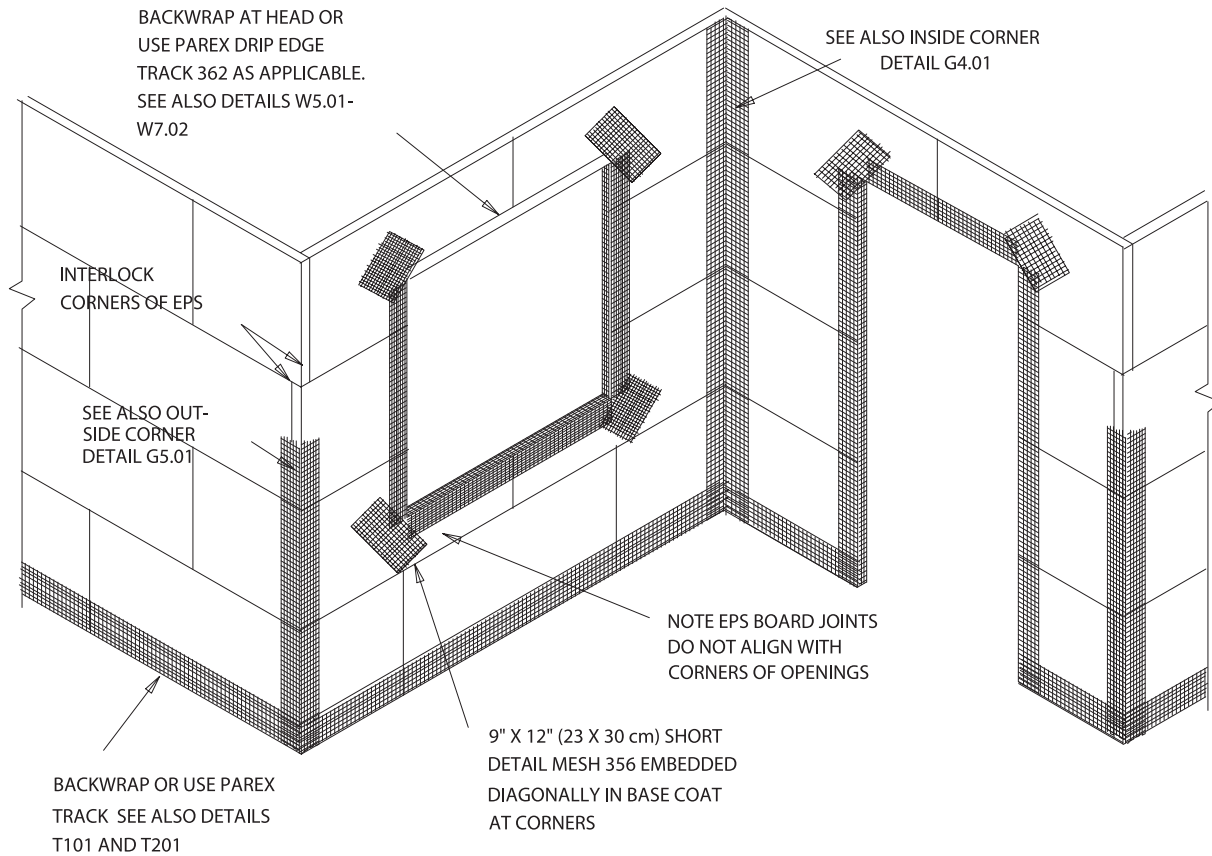
– APPLY BOARDS OVER DRY SUBSTRATES IN A RUNNING BOND PATTERN. TYPICALLY LONG EDGE HORIZONTALLY. STAGGER VERTICAL JOINTS IN SUCCESSIVE COURSES.

– INTERLOCK ENDS AT OUTSIDE AND INSIDE CORNERS.

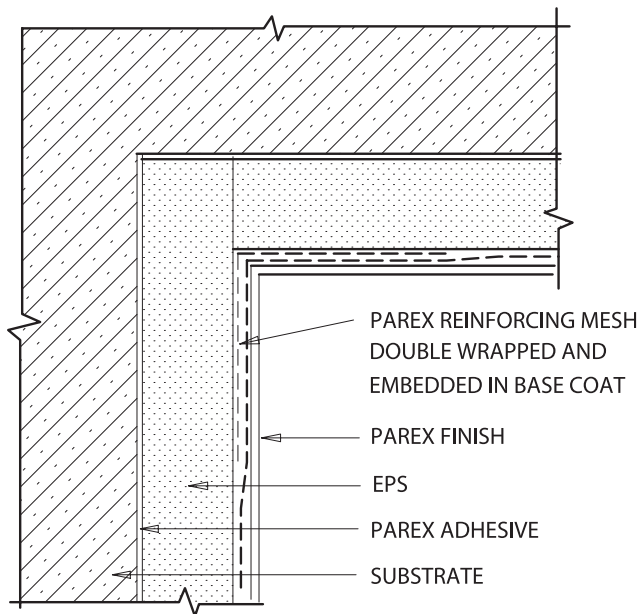
– ABUT BOARDS TIGHTLY AT JOINTS WITHIN AND BETWEEN EACH COURSE TO PRODUCE A FLUSH, CONTINUOUSLY EVEN SURFACE WITHOUT GAPS. FILL ANY GAPS LARGER THAN 3/32" WITH INSULATION BOARD SLIVERS.

– TO ALLOW THE ADHESIVE TO FORM A POSITIVE BOND, A MINIMUM OF 24 HOURS, OR LONGER AS REQUIRED BY CONDITIONS, SHALL ELAPSE PRIOR TO THE RASPING OF THE INSULATION BOARD.

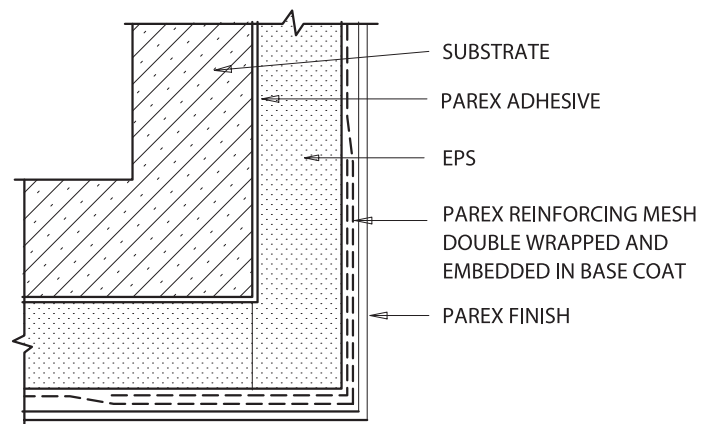
– LEVEL ANY IRREGULARITIES IN THE SURFACE OF THE INSULATION BOARD.



G3.01 PRELIMINARY MESH APPLICATION

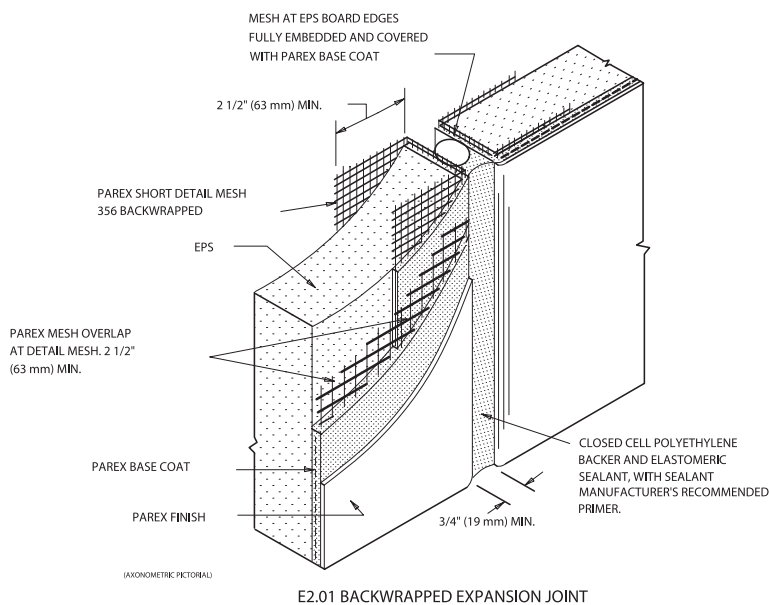
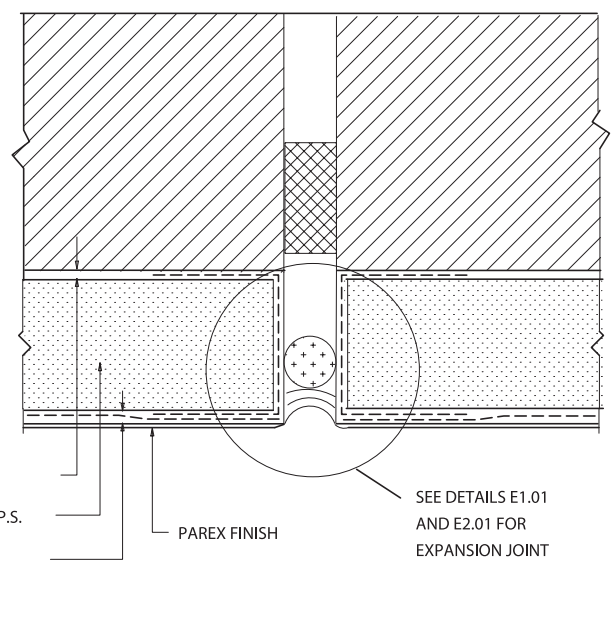
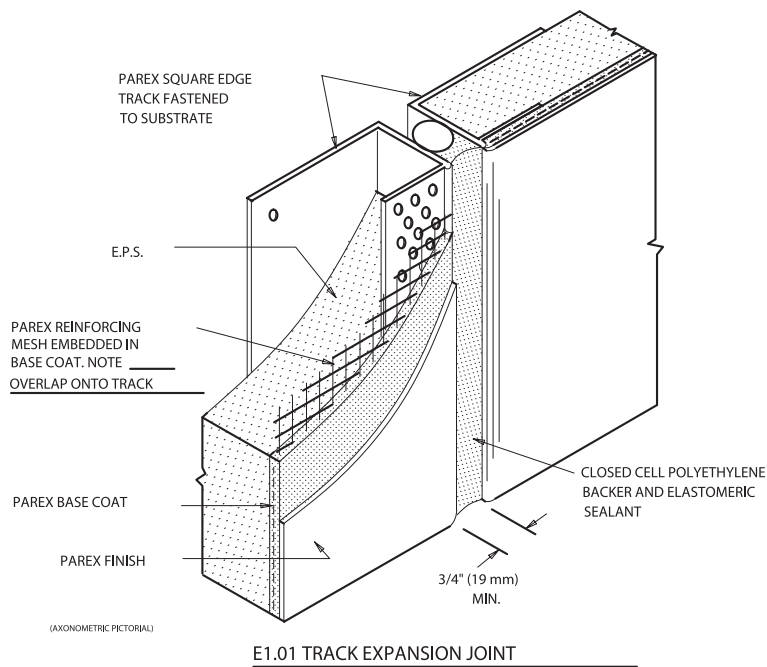


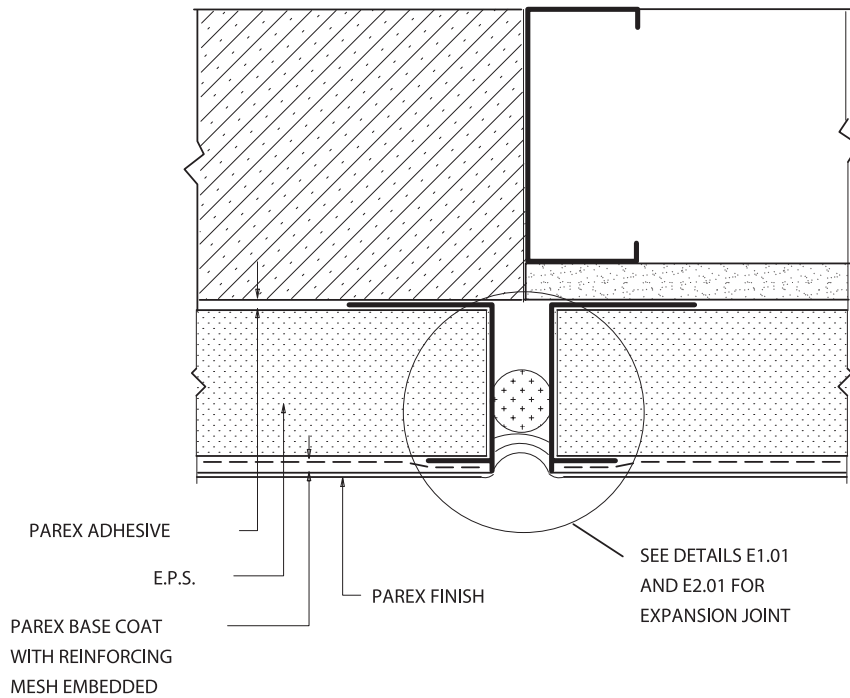
G4.01 INSIDE CORNER



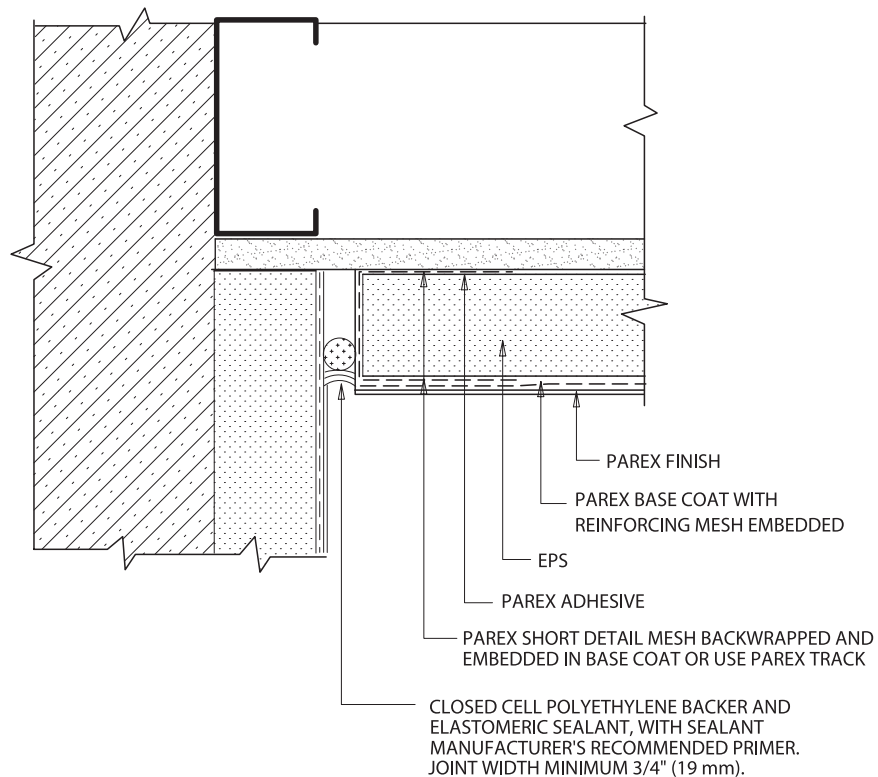
G5.01 OUTSIDE CORNER

PB EIF System Details



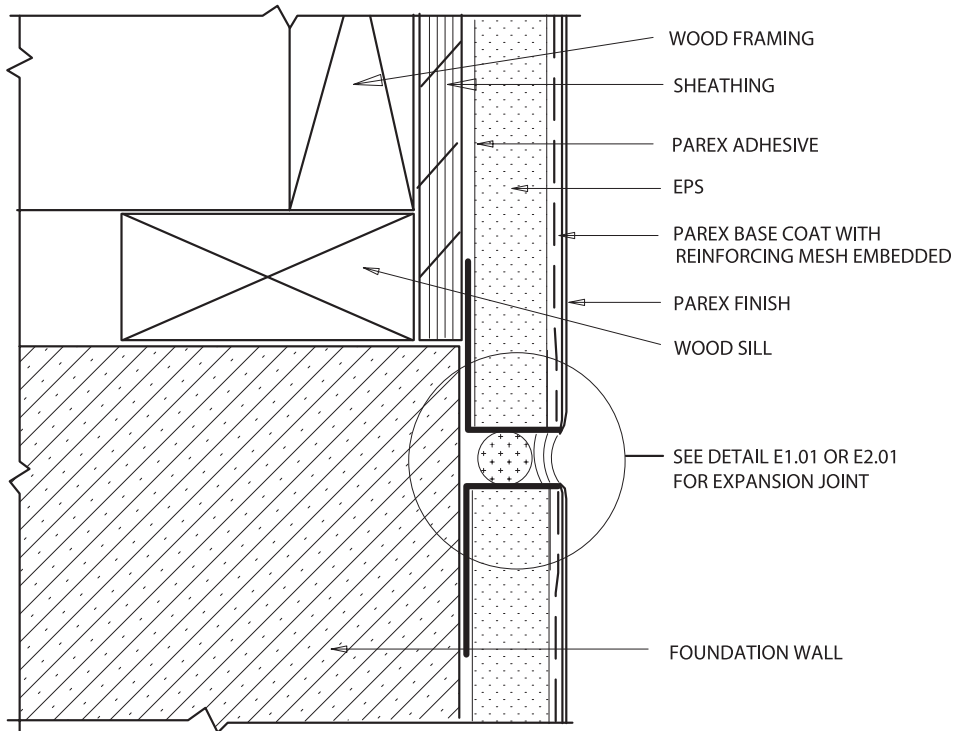


E4.01 DISSIMILAR SUBSTRATES

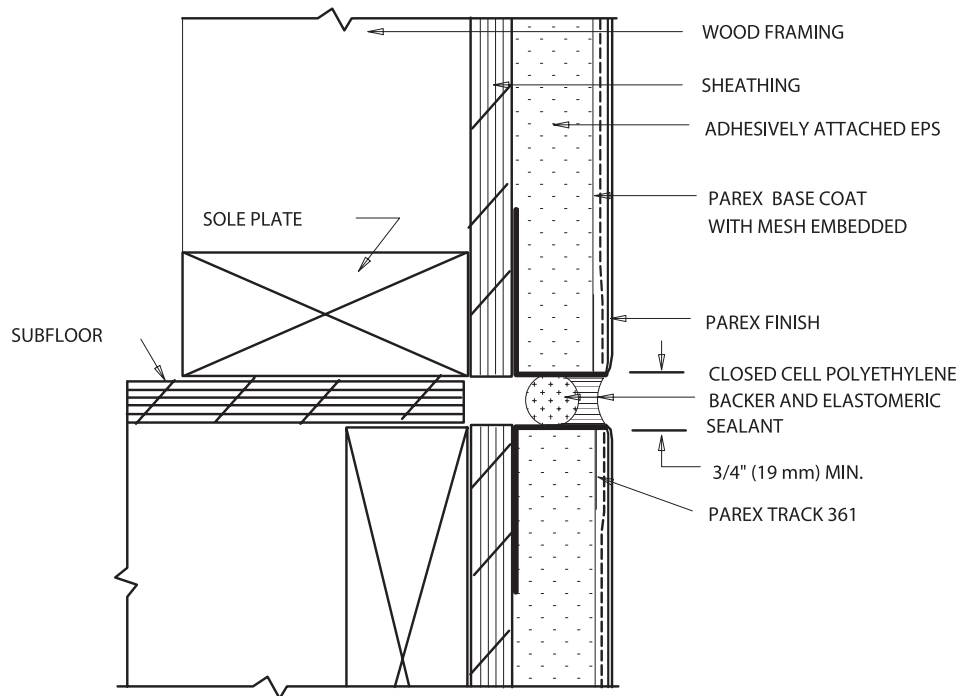


E5.01 INSIDE CORNER AT DISSIMILAR SUBSTRATES

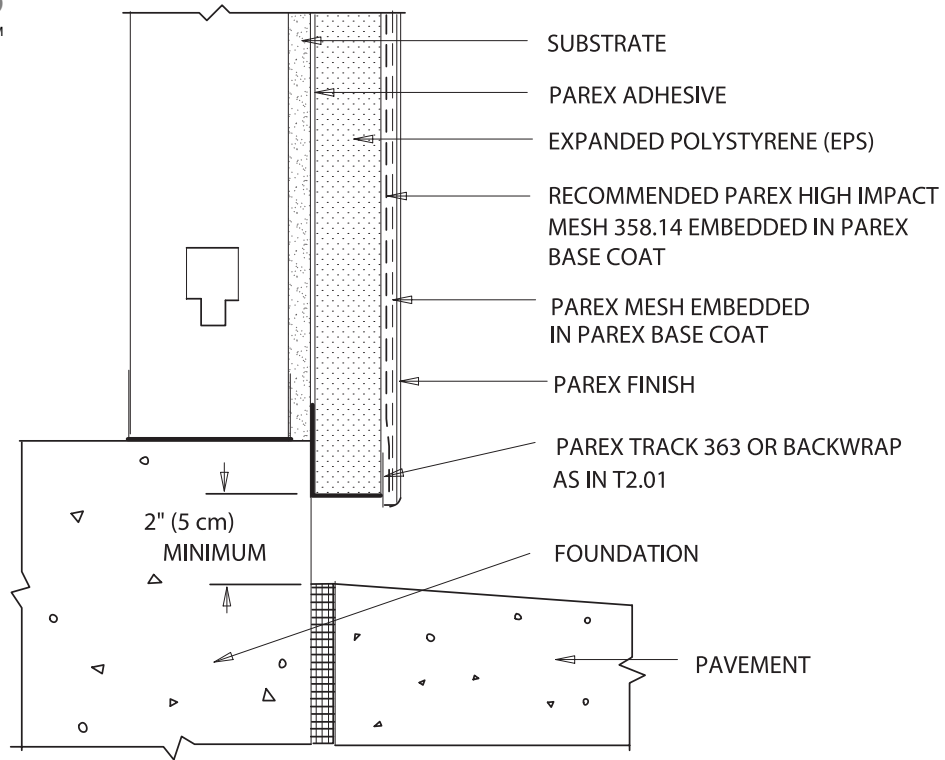
PB EIF System Details



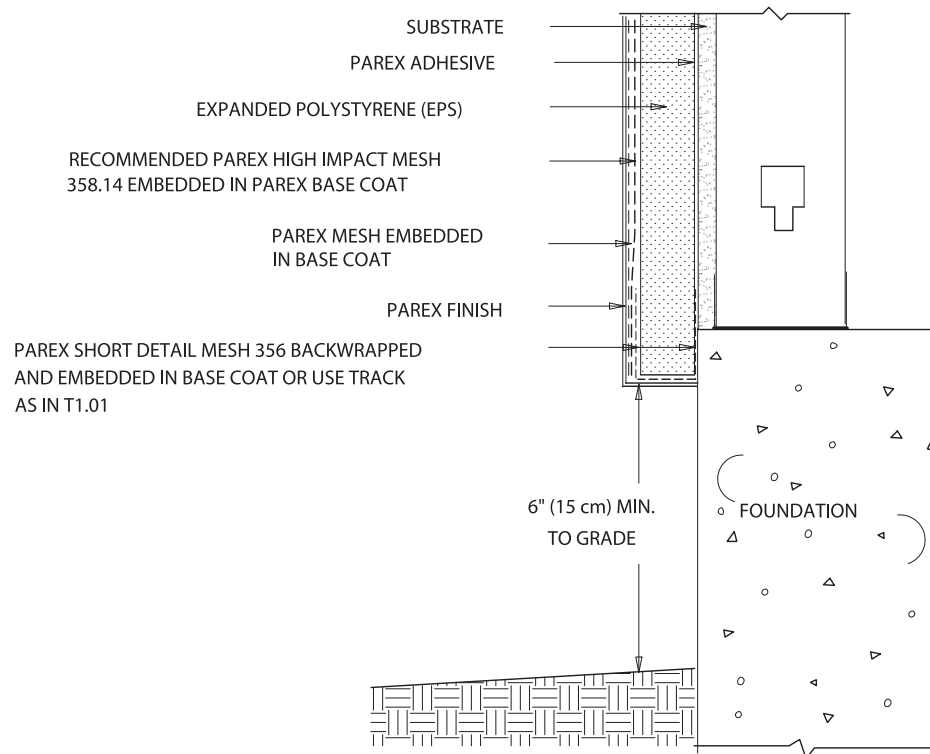
E6.01 WOOD FRAMED SILL



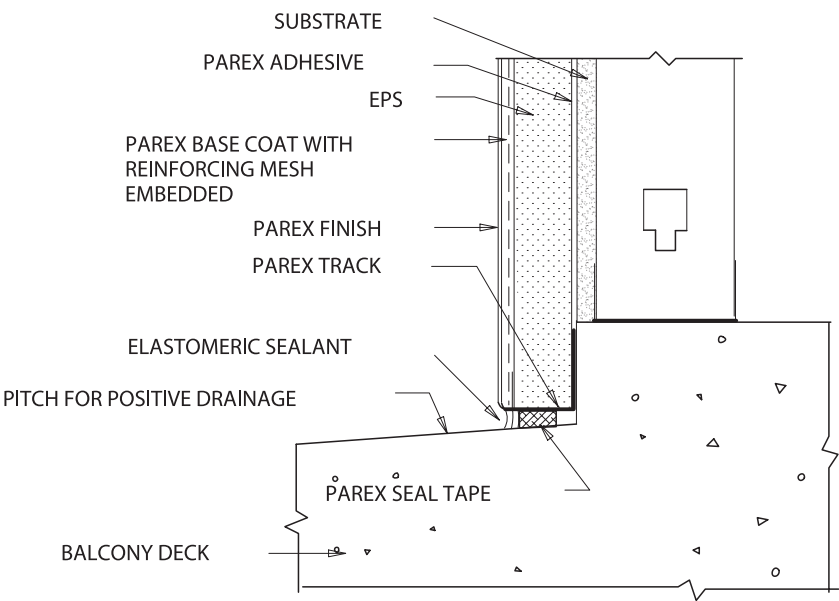
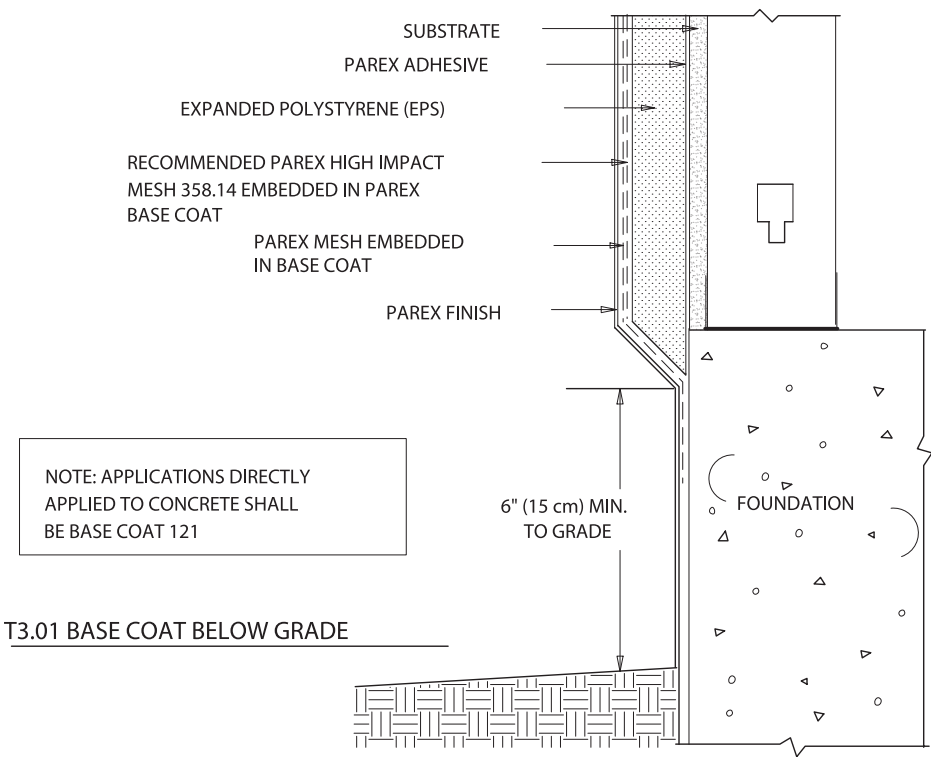
E7.01 WOOD FRAMED FLOOR LINE

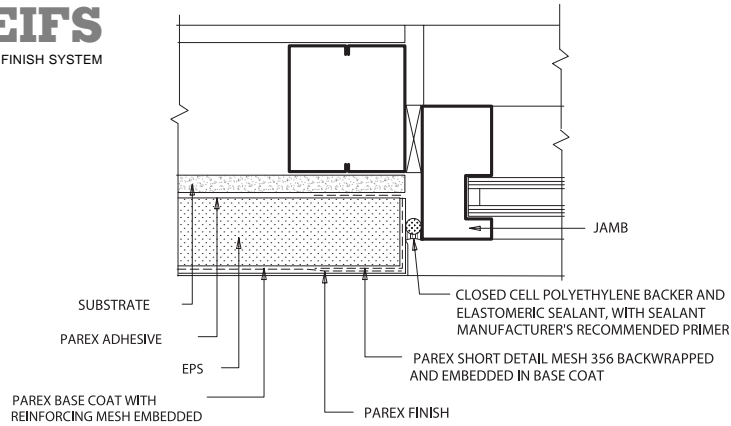


T1.01 TERMINATION ABOVE PAVEMENT

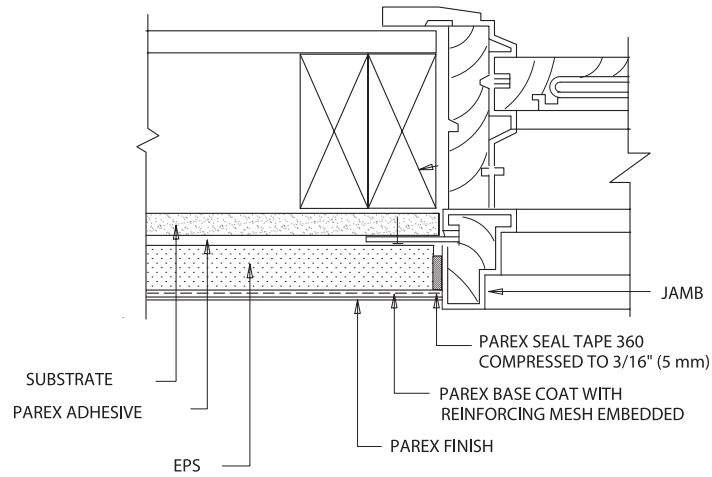


T2.01 TERMINATION ABOVE GRADE

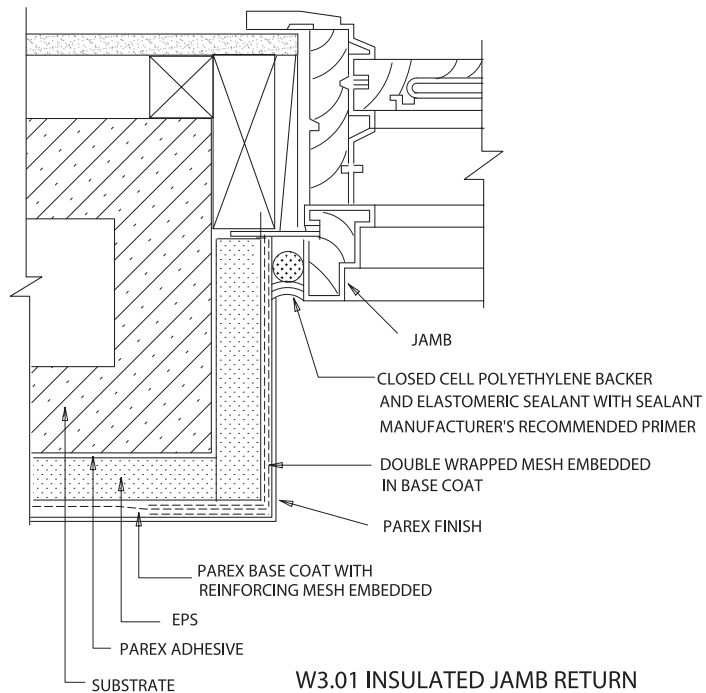




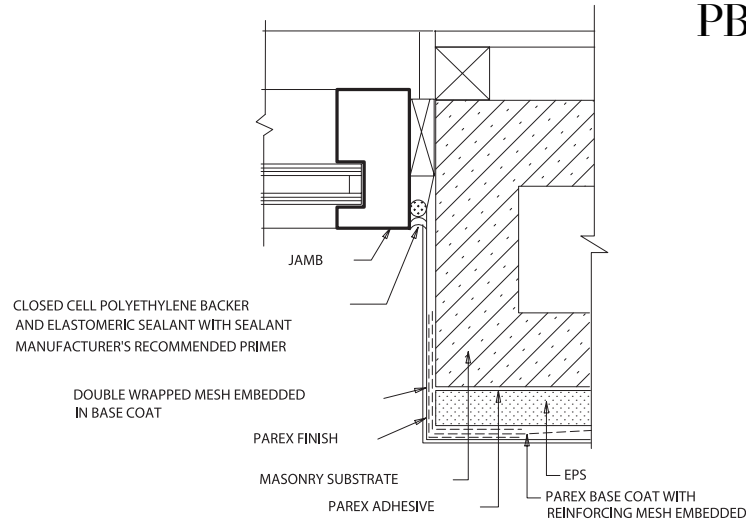
W1.01 BACKWRAPPED JAMB



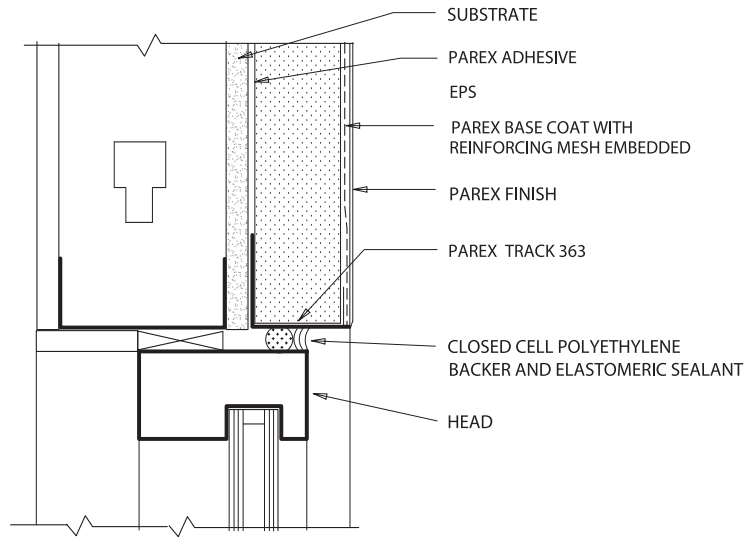
W2.01 SEAL TAPE TERMINATION AT FLUSH/ PROJECTING JAMB



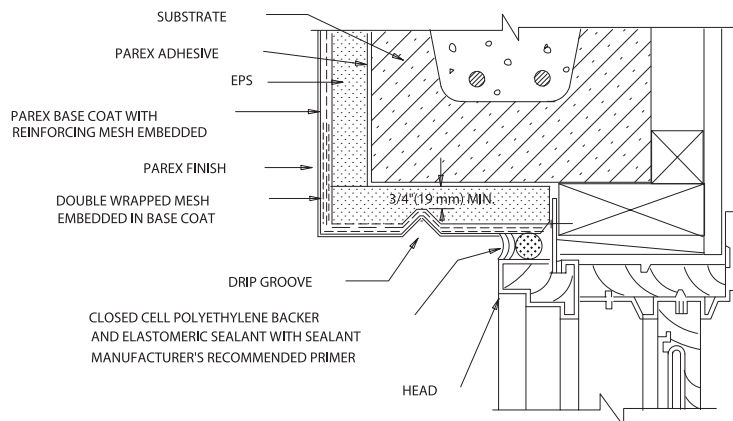
W3.01 INSULATED JAMB RETURN



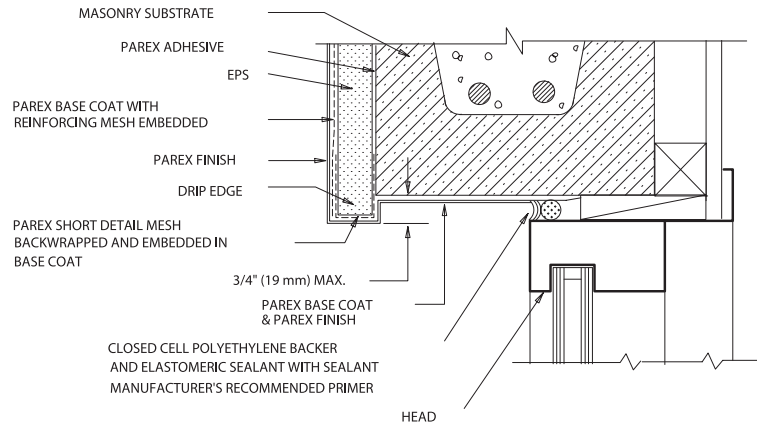
W4.01 UNINSULATED JAMB RETURN



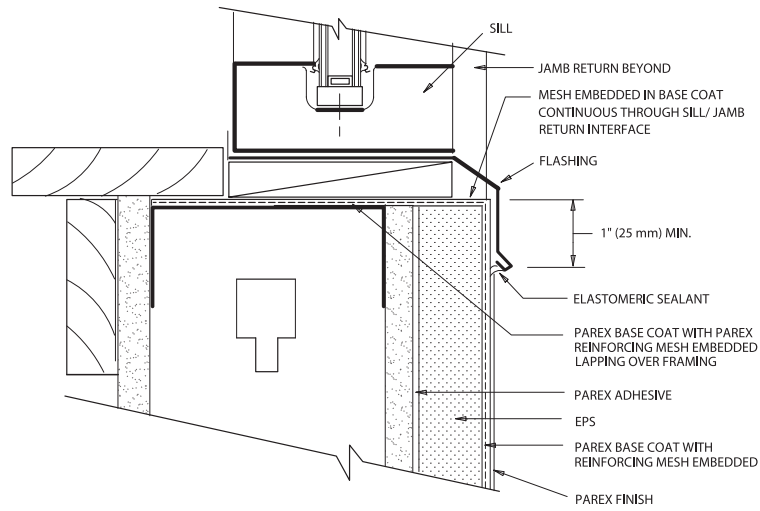
W5.01 HEAD WITH DRIP EDGE TRACK 362



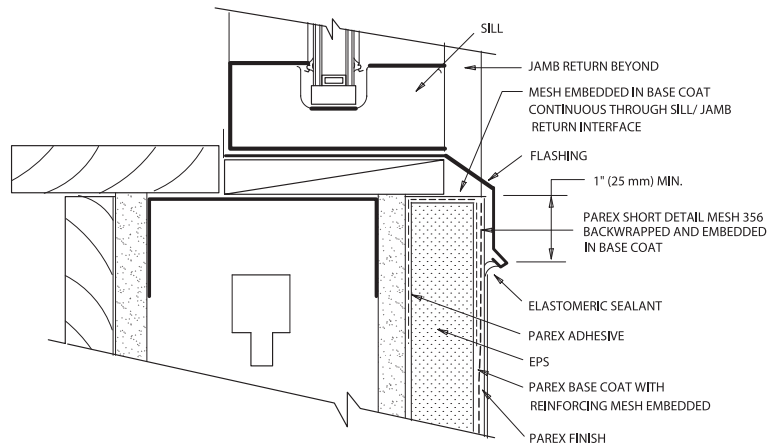
W6.01 INSULATED HEAD RETURN



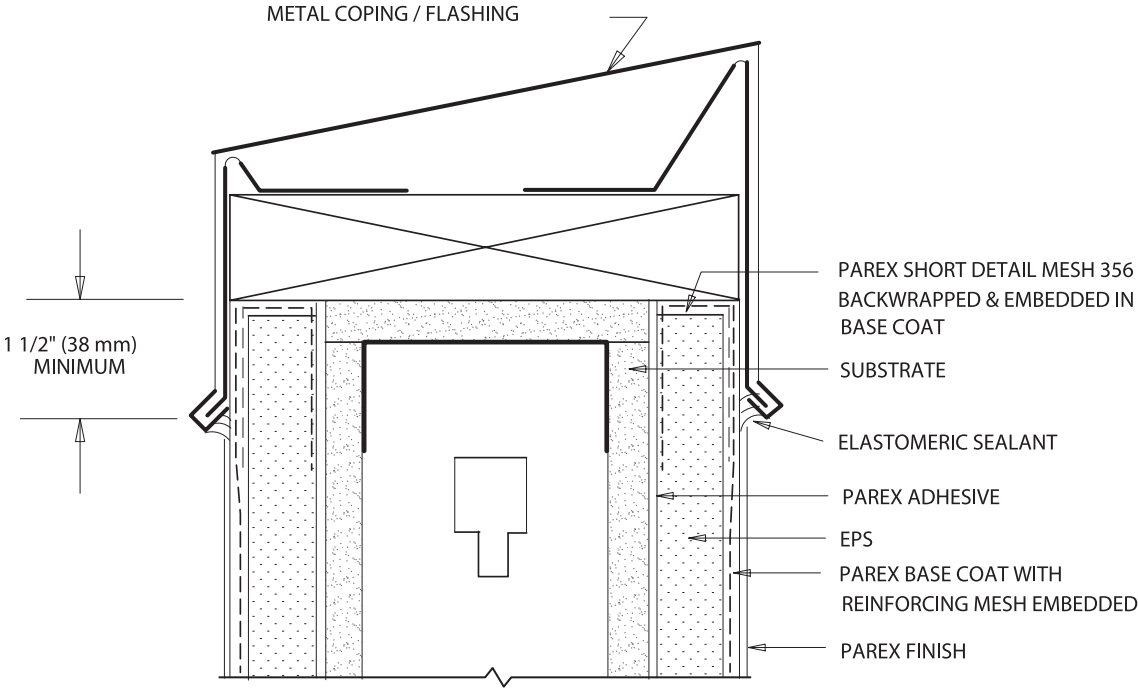
W7.02 UNINSULATED HEAD RETURN



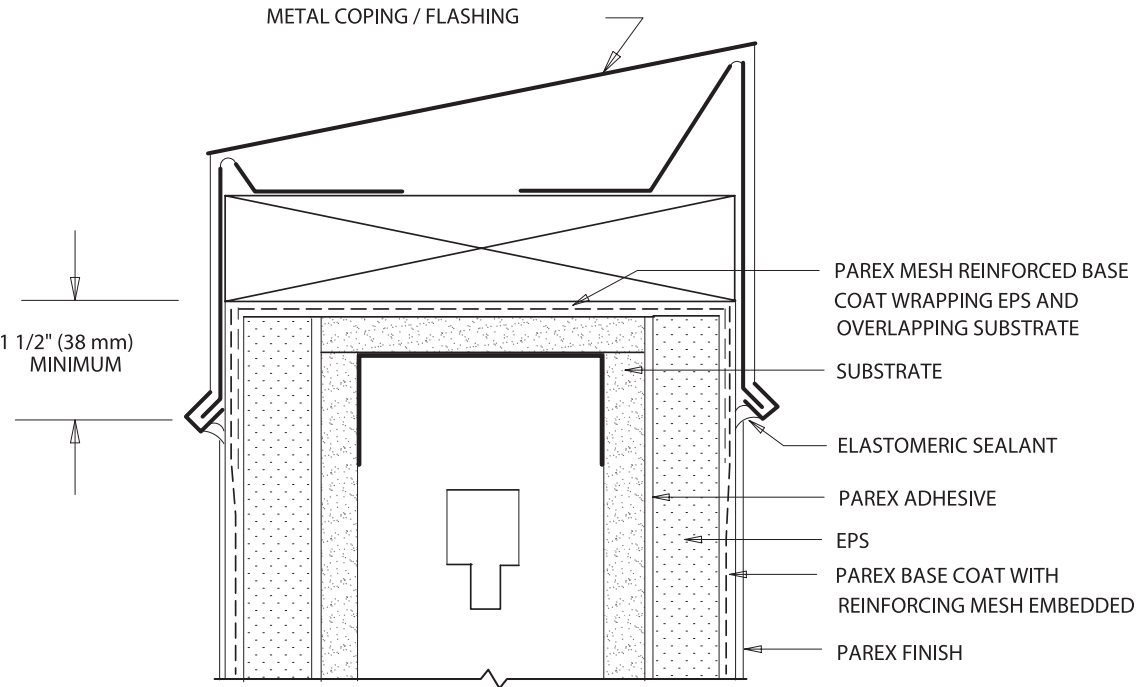
W8.03 ROUGH SILL EDGE WRAPPED PRIOR TO FLASHING



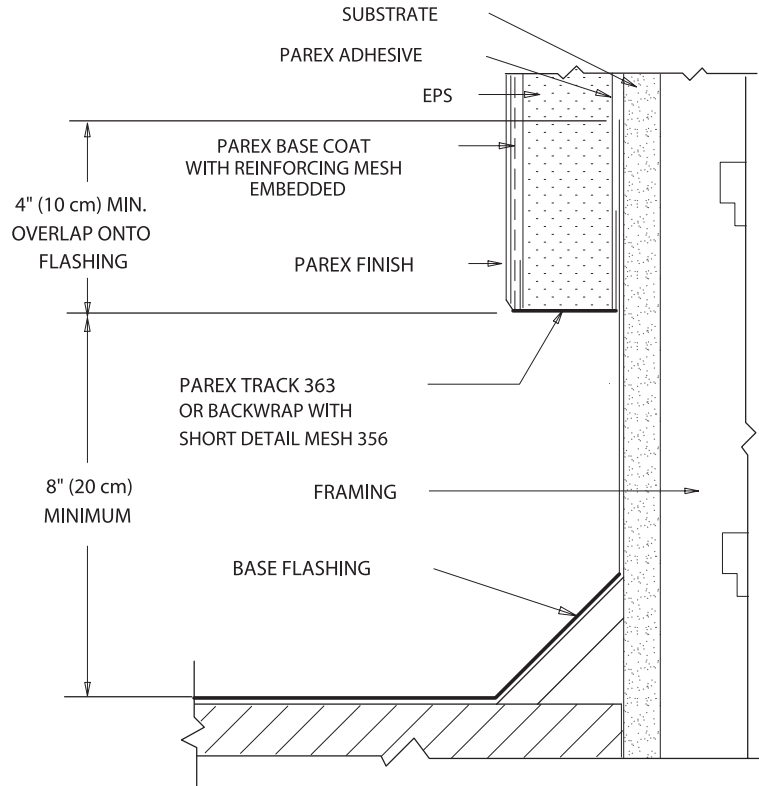
W8.04 BACKWRAPPED TERMINATION AT SILL



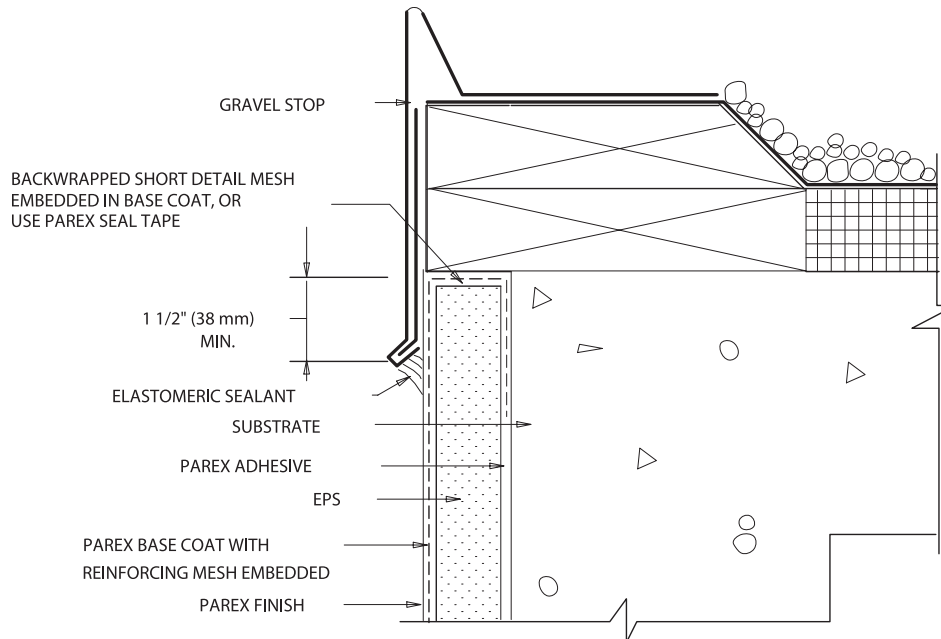
R1.03 PARAPET



R1.04 PARAPET COATED PRIOR TO FLASHING

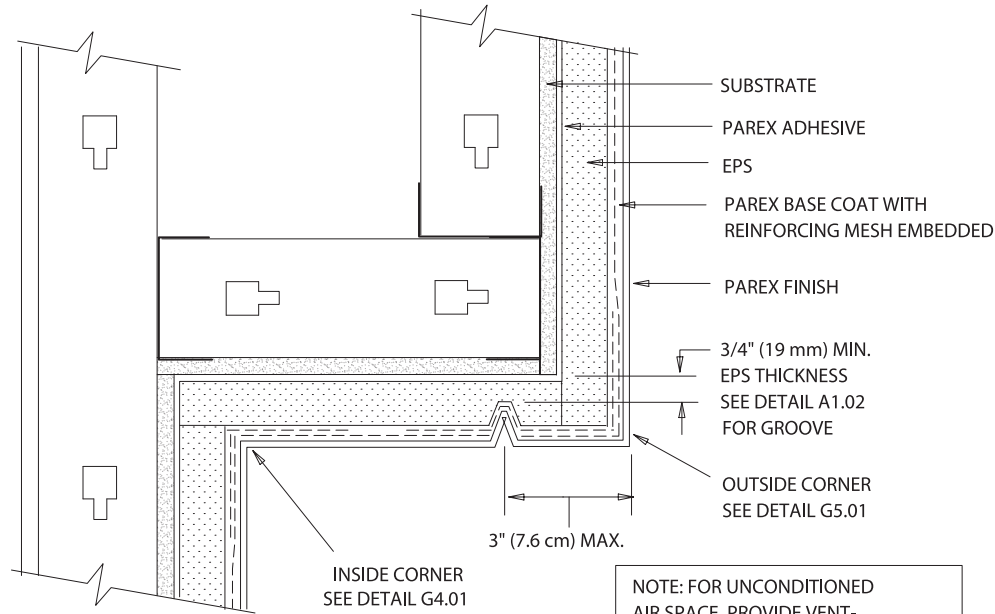


R2.01 HIGH WALL AT LOW ROOF

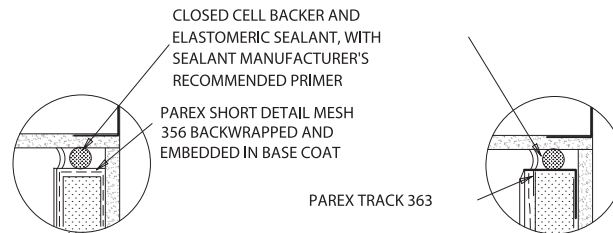


R3.01 GRAVEL STOP

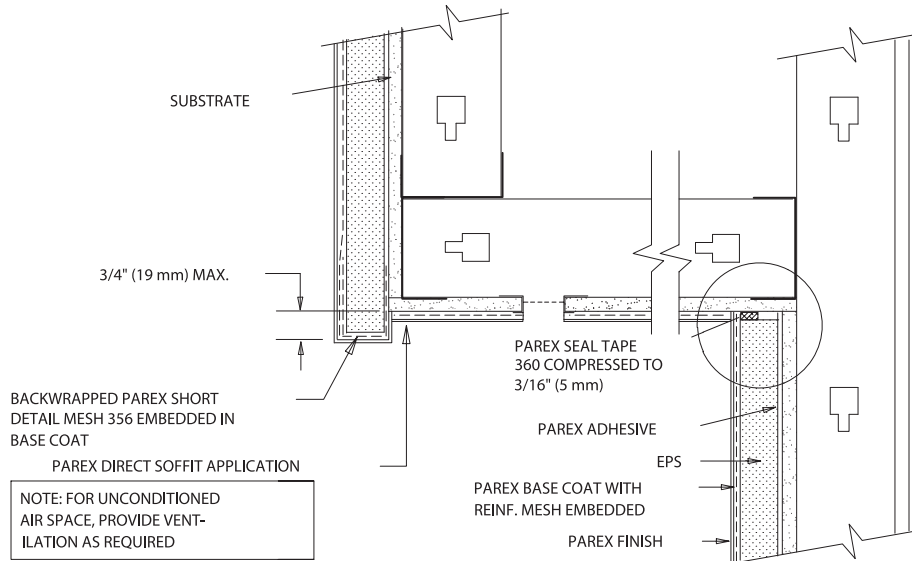
PB EIF System Details



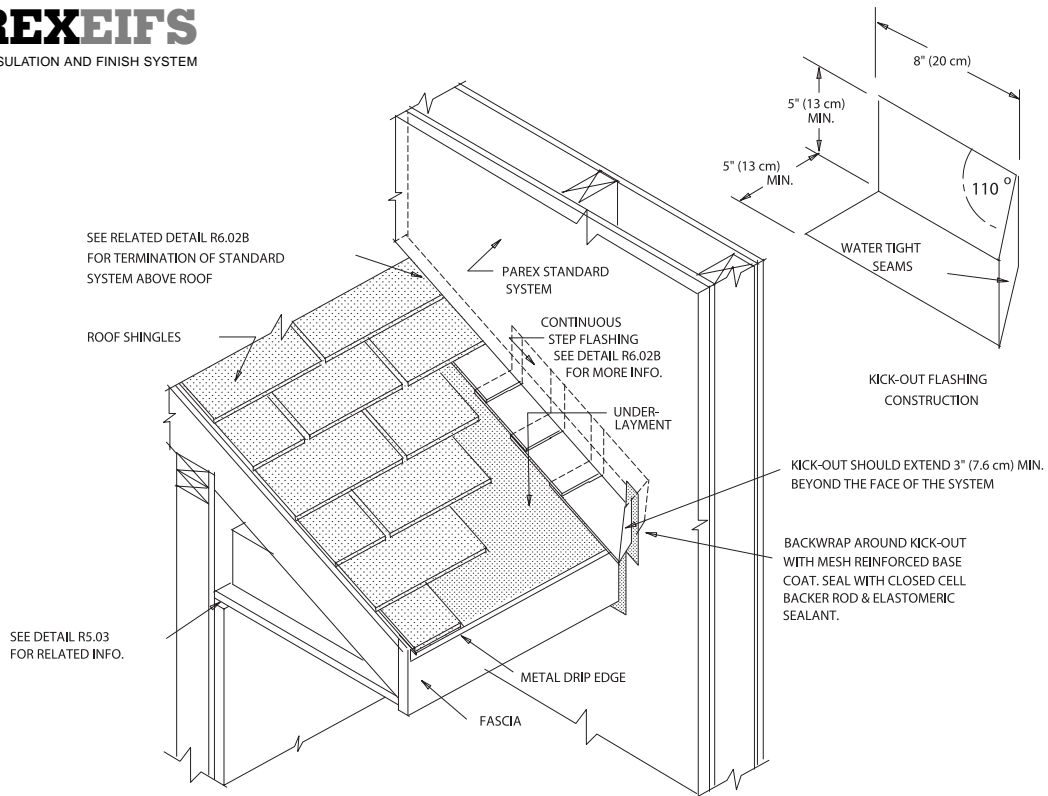
R4.01 INSULATED SOFFIT



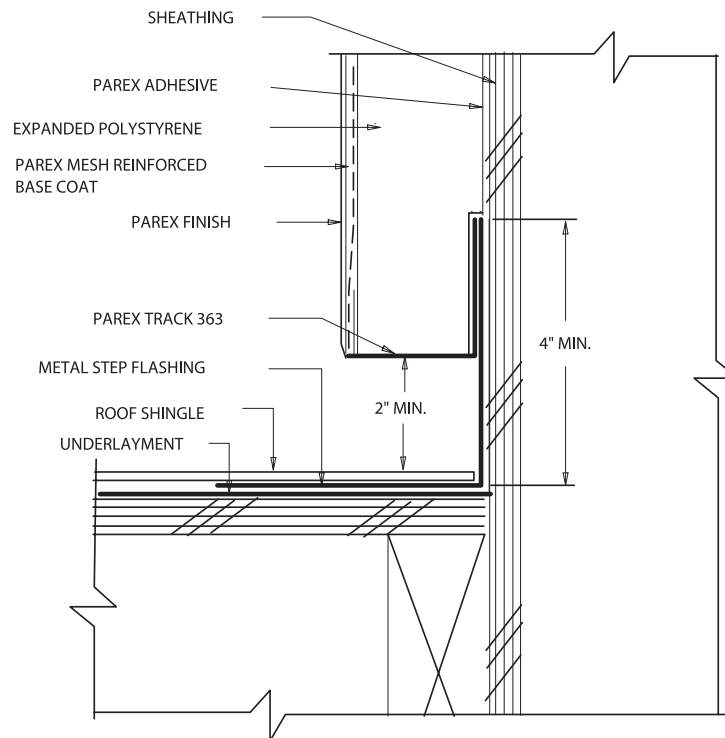
ALTERNATES



R5.03 TERMINATION AT SOFFIT

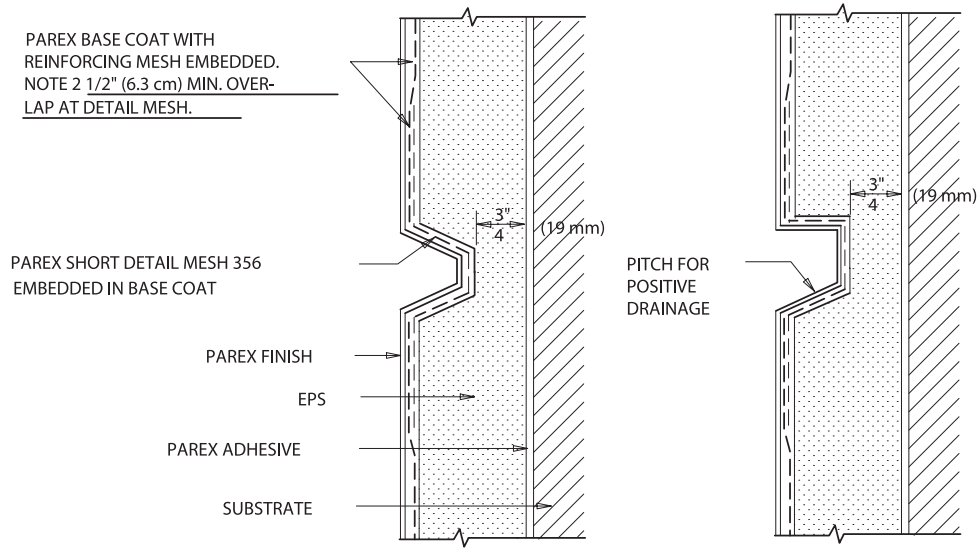


R6.02 INTERSECTION OF ROOF CORNICE AT STANDARD SYSTEM WALL

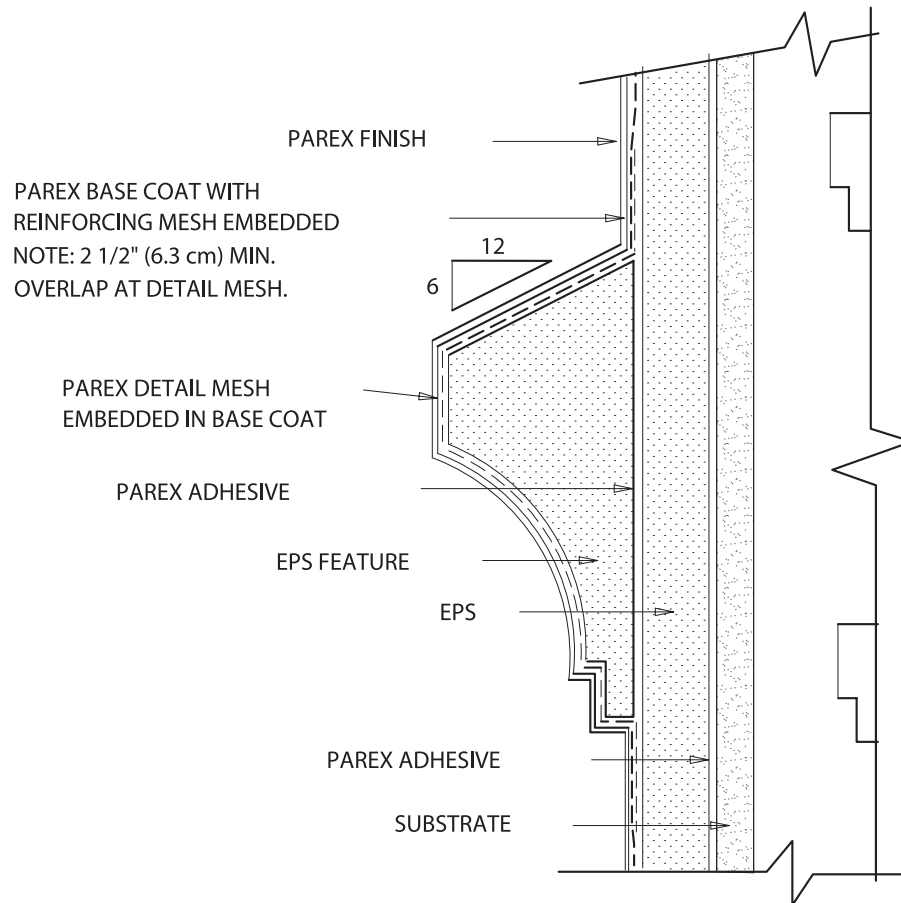


R6.02B INTERSECTION OF ROOF CORNICE AT STANDARD SYSTEM WALL

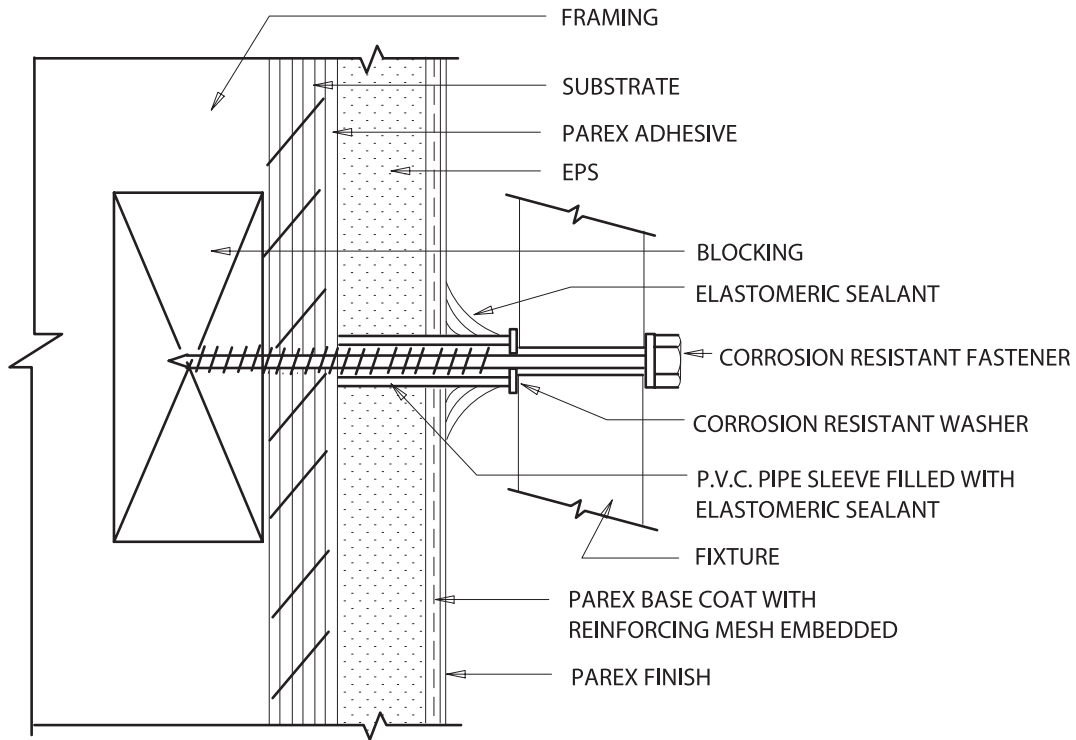
PB EIF System Details



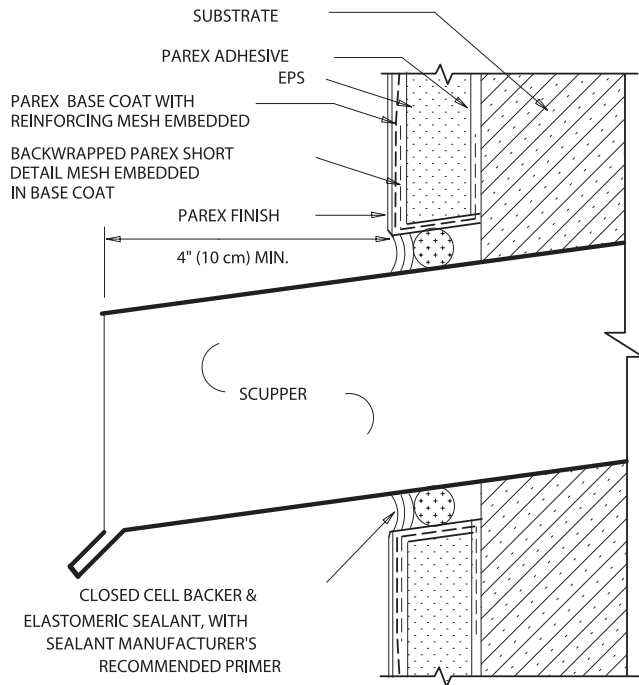
A1.02 AESTHETIC GROOVE / REVEAL



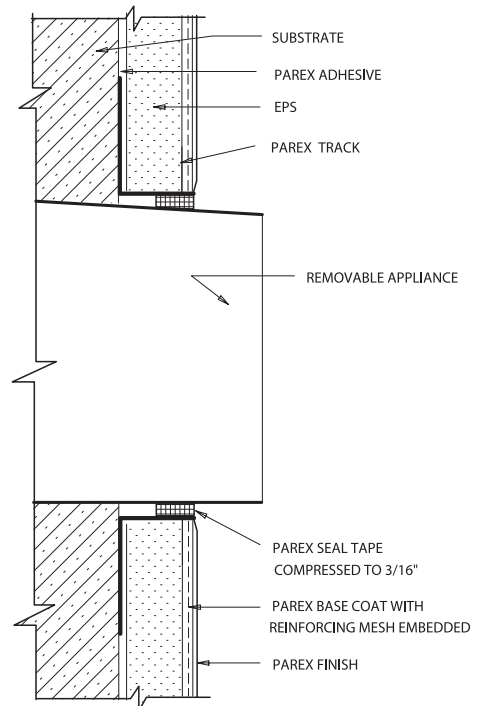
A2.01 SMALL AESTHETIC BAND/ PROJECTION



P1.01 FIXTURE ATTACHMENT



P2.02 SCUPPER



P3.01 REMOVABLE APPLIANCE

PB EIF System Details

PB EIF System Details



800-537-2739

Fax: (770) 482-6878

www.parex.com

Parex Inc. P.O. Box 189, 1870 St. Mt.-Lithonia Road, Redan, GA 30074

California Plant & Office 11290 South Vallejo Court, French Camp, CA 95231
(209) 983-8002 Fax (209) 983-1431